

Fabric and Finish Selections #40

SPECIFICATIONS:

HIGH PRESSURE PLASTIC LAMINATE: Meets federal standard LP-508G and motor vehicle safety standard 302 flammability. Clean with mild soap and water, or mild solvents.

THERMOFUSED MELAMINE: (NAVA worksurfaces only) meets ALA 1992 and NEMA LD3-1991 GP-20 performance standards. Wood grains meet ALA 1992. Clean with mild soap and water, or mild solvents.

GLASS: Meets A.N.S.I. #Z-97, 1-1972 standard, which meets or exceeds OSHA, federal, state and local safety codes.

BAKED ENAMEL: Durable, hard finish baking enamel, Class "A" fire rated, electrostatically applied, deep bake 350°. Clean with mild soap and water.

VINYL: Class "A" fire rated, meets federal specification CCC-W-408A Type 1, CFFA-W-101A Type 1 Class A, and ASTM-F-793-82. Clean with mild detergent and water, or liquid household cleaner.

FABRIC – ANCHORAGE, CROSSTOWN, LILYPAD, MINGLE, NETWORK, NITRO, SWIZZLE STICK, AND TAMO: 100% polyester, Class "A" fire rated, passes ASTM E-84 and California 117 Sec. E (CS-191-53). Clean with mild water-free solvents, water based cleaning agents, or foam. **FR 701:** In addition to the above specifications, passes NFPA-701.

PREMIUM FINISH UPCHARGES:

WORKSURFACES – 7122 EMPIRE MAHOGANY (High Pressure Laminate & Thermofused Melamine): plus 10%.

GLASS – 506 SMOKE TINT & 596 BRONZE (PARTIAL GLASS): Plus 10% of the Baked Enamel partial glass price.
(FULL GLASS): Plus 20% of the Baked Enamel full glass price.

516 OBSCURE, 546 SPRAYLITE, & ACRYLIC (PARTIAL GLASS): Plus 35% of the Baked Enamel partial glass price.
(FULL GLASS): Plus 80% of the Baked Enamel full glass price.

526 NIAGARA & POLYCARBONATE (PARTIAL GLASS): Plus 60% of the Baked Enamel partial glass price.
(FULL GLASS): Plus 125% of the Baked Enamel full glass price.

536 REED & 556 SNOWFLAKE (PARTIAL GLASS): Plus 150% of the Baked Enamel partial glass price.
(FULL GLASS): Plus 325% of the Baked Enamel full glass price.

PAINT – SPECIAL COLOR MATCH: Add \$150.00 NET per color.

VINYL – 1608 CASHMERE & 1694 MIST GREY: Use Standard Fabric price.

FABRIC – CUSTOMER'S OWN MATERIAL (COM): Plus 5% of the Standard Fabric price.

Fabric and Finish Selections #40

PLASTIC LAMINATE – WORK SURFACES

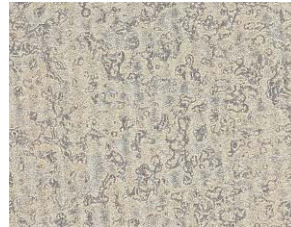
(Matte finish is standard, unless indicated)



VQS→ 4621 Wh. Nebula **N**



4790 Greystone



4850 Stucco



VQS→ 4841 Desert **N**



4661 Iron



4759 Marine



4852 Shade



4678 Galvan



7909 Fusion Maple



7054 Cherry **N**



7039 Windsor Mahog.



§ 7122 Empire Mahog. (gloss) **N**

GLASS – TEMPERED SAFETY

(P500 Clear is standard. § Acrylic or polycarbonate available on request.)



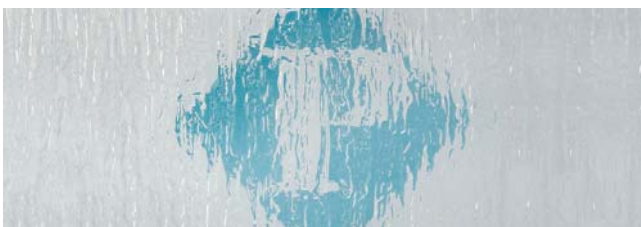
§ P506 Smoke Tint



§ P556 Snowflake



§ P536 Reed



§ P526 Niagara



§ P516 Obscure



§ P546 Spraylite

PAINT – SEMI-GLOSS

(VQS → Ask about other paint colors on Quickship.

(\$ Special color match available on request)



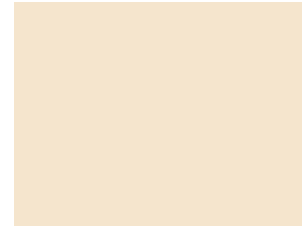
VQS → ▲ M927 Light Grey



▲ M607 Brownstone



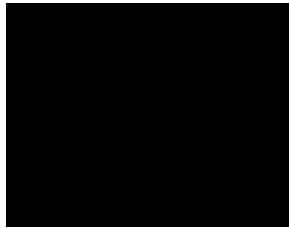
▲ M625 Taupe



▲ M531 Light Beige



▲ M608 Slate



▲ M600 Black



M630 Warm Beige



M612 Natural

VINYL – PANEL FINISH

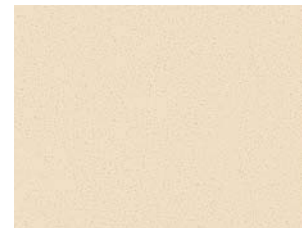
(Not available on NAVA panels, or panels over 54" wide)



Y0442 Granite



Y0597 Thatch



(\$ Y1608 Cashmere



(\$ Y1694 Mist Grey



Y0404 Moss



Y0514 Harvest

NOTES:

VQS → Indicates a Quickship finish.

(\$ Indicates a premium upcharge on this finish. Please consult the price list or the factory.

▲ Indicates a matching work surface and countertop edge trim color.

N Indicates a NAVA melamine match. All other laminates available on NAVA with HPL upcharge. Please consult the price list or the factory.

◆ Indicates other patterns and colors of this finish may be available. Please consult the web site or the factory.

Actual colors may vary from this printed card. Please consult the factory for samples.

PREMIUM FABRIC – LILY PAD, NETWORK, NITRO, SWIZZLE STICK, TAMO



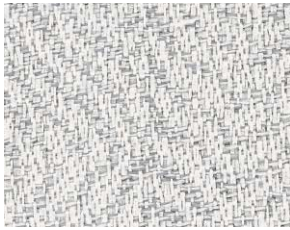
NW - 5821 Powder



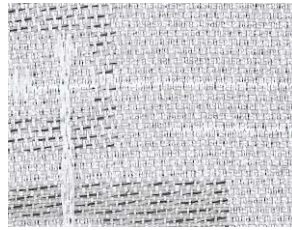
NW - 5851 Ginger



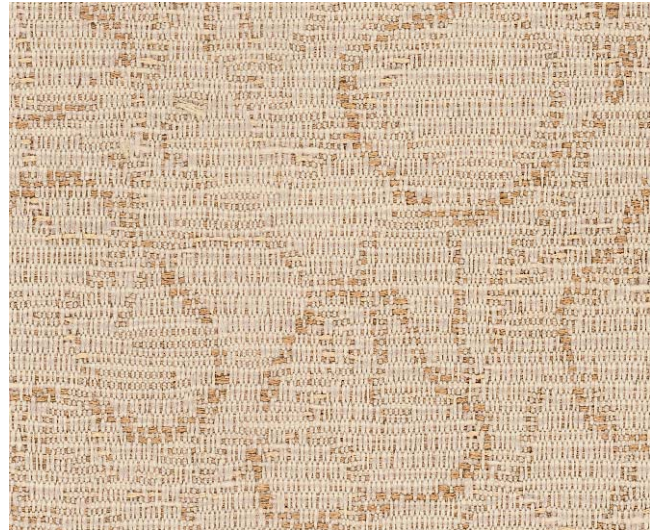
SW - 2240 Butterscotch



TM - 1660 Ice



SW - 2230 Cloud



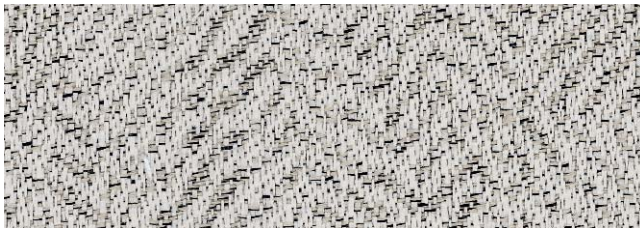
LP - 1851 Squash



NT - 1710 Tonic



LP - 1890 Frost



TM - 1661 Tweed



NW - 5852 Mocha



TM - 1651 Barley



LP - 1830 Driftwood



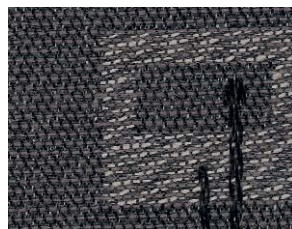
NW - 5860 Zinc



NT - 1740 Rootbeer



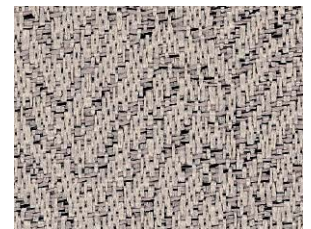
NW - 5830 Java



SW - 2221 Bitters



LP - 1820 Latte



TM - 1630 Cappuccino

PREMIUM FABRIC – LILY PAD, NETWORK, NITRO, SWIZZLE STICK, TAMO



TM - 1650 Bamboo



SW - 2212 Banana



LP - 1841 Dew



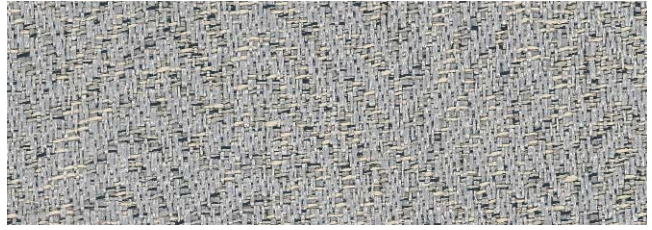
NT - 1743 Raindrop



SW - 2213 Vermouth



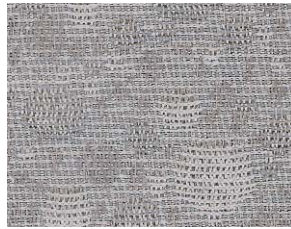
NT - 1741 Ginger Ale



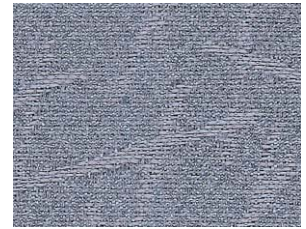
TM - 1640 Gravel



NT - 1742 Cream Soda



NT - 1720 Spritzer



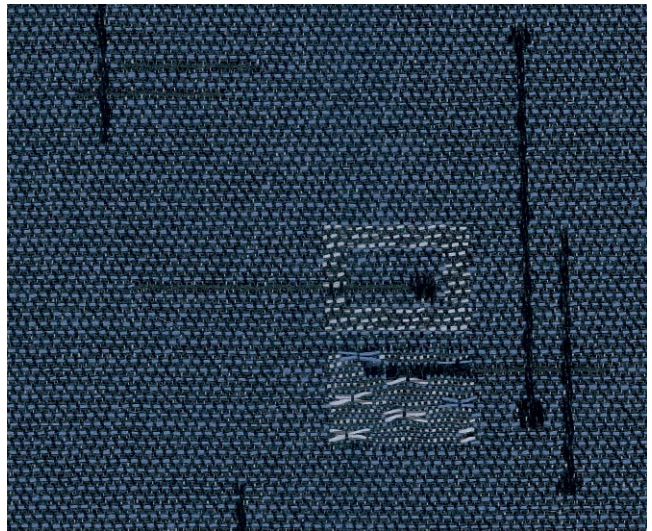
NW - 5861 Lilac



LP - 1860 Concrete



NW - 5871 Celery



SW - 2220 Blue Moon



SW - 2210 Peppermint



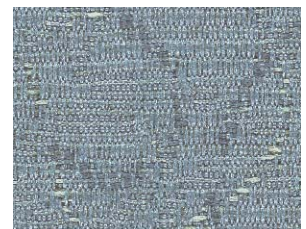
LP - 1810 Pistachio



NW - 5842 Bottle

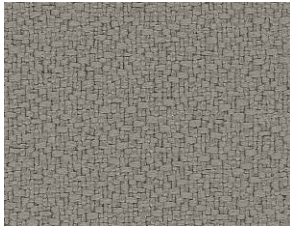


TM - 1641 Glacier

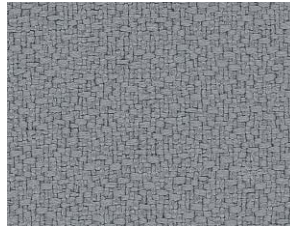


LP - 1880 Carbon

STANDARD FABRIC – FR701, ANCHORAGE, CROSSTOWN, MINGLE



AN - 3549 Goose



AN - 3553 Asteroid



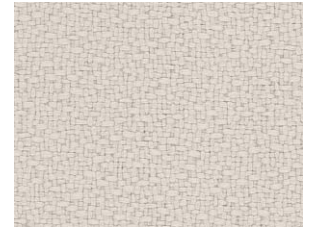
CT - 2680 Buff



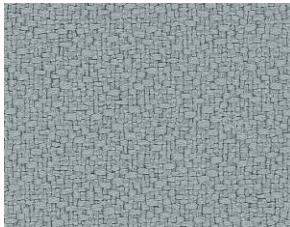
CT - 2660 Fieldstone



MN - 2790 Biscuit



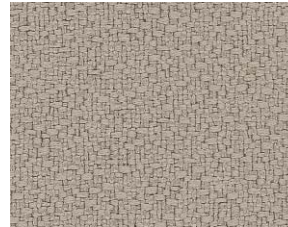
AN - 3529 Birch



AN - 3517 Stone



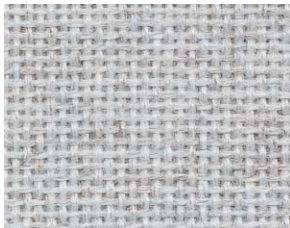
MN - 2760 Crystal



AN - 3535 Angora



VQS - FR7 - 380 Quartz



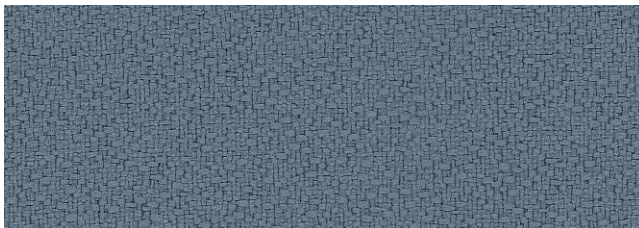
FR7 - 538 Silver Paper



FR7 - 401 Blue Neutral



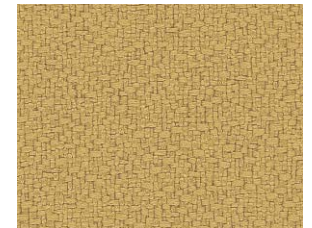
MN - 2730 Straw



AN - 3527 Wolf



AN - 3530 Vanilla



AN - 3534 Spice



CT - 2670 Stucco



MN - 2780 Putty



FR7 - 400 Cherry Neutral



CT - 2630 Ray

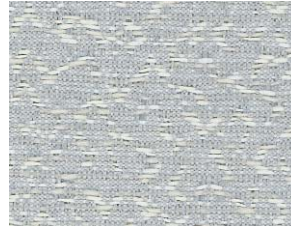
STANDARD FABRIC – FR701, ANCHORAGE, CROSSTOWN, MINGLE



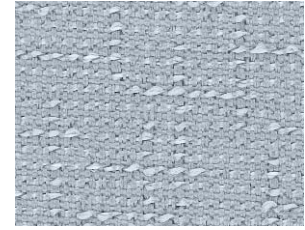
FR7 - 481 Pearl



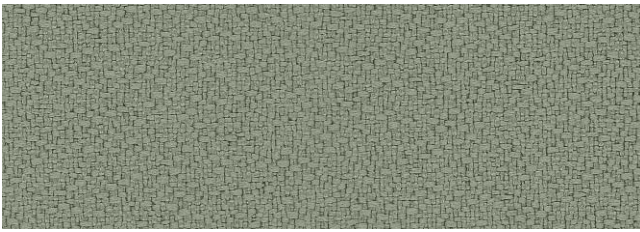
CT - 2650 Chamois



MN - 2770 Winter



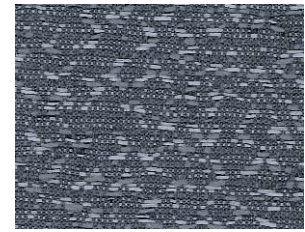
CT - 2661 Sterling



AN - 3547 Eucalyptus



FR7 - 238 Grey Mix



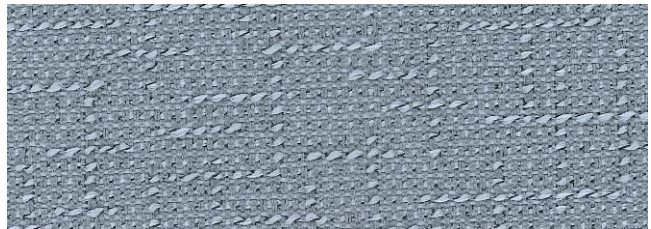
MN - 2710 Graphite



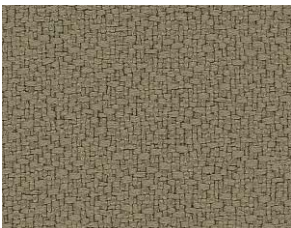
MN - 2740 Green Tea



FR7 - 130 Wheat



VQS CT - 2640 Waterfront



AN - 3550 Cumin



AN - 3590 Goldenrod



MN - 2750 Rapids



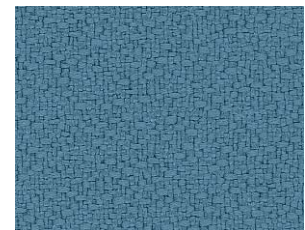
FR7 - 150 Wedgewood



CT - 2610 Cement



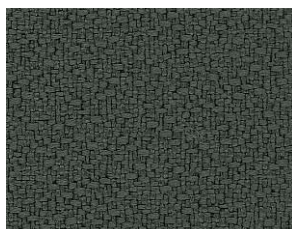
CT - 2620 Mystic



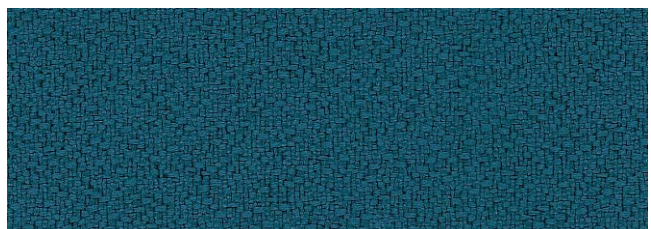
AN - 3526 Quarry Blue



MN - 2720 Khaki



AN - 3593 Fossil



AN - 3551 Deep Water